

DTF-T652/653/654

DIRECT TO FILM PRINTER



Self-development



long life



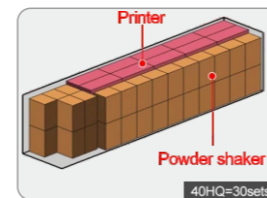
High precision



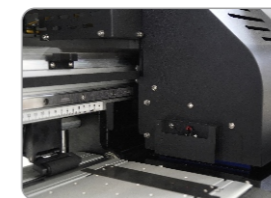
low cost

TECHNICAL PARAMETER

Model	DTF-T652	DTF-T653	DTF-T654
Printhead	Epson I3200-A1/Epson I1600-A1		
Printhead Quantity	2	3	4
Printing Color	4C+W	4C+Fo+Fm+Fy+Fg+W	4C+W
Printing Speed	I3200-A1	High speed mode	720*1800DPI 6PASS 9m ² /h 720*2400DPI 8PASS 6m ² /h 720*1200DPI 4PASS 23m ² /h 720*1800DPI 6PASS 15m ² /h 720*2400DPI 8PASS 11m ² /h
		High precision mode	720*1800DPI 6PASS 7m ² /h 720*2400DPI 8PASS 5m ² /h 720*1200DPI 4PASS 18m ² /h 720*1800DPI 6PASS 12m ² /h 720*2400DPI 8PASS 9m ² /h
	I1600-A1	720*900DPI 6PASS 4m ² /h 720*1200DPI 8PASS 3m ² /h 720*1800DPI 12PASS 2m ² /h 720*900DPI 6PASS 13m ² /h 720*1200DPI 8PASS 9m ² /h 720*1800DPI 8PASS 6m ² /h 720*900DPI 6PASS 10m ² /h 720*1200DPI 8PASS 7m ² /h 720*1800DPI 8PASS 5m ² /h	
Printing Size	600mm		
Heating Method	Front and back independent heating		
Ink System	Auto ink supply, white ink circulating and stirring		
Power Supply	110V/220V 50~60HZ 350W/3500W		
Work Environment	Temperature:20°C~30°C Humidity:35%~65%		
Machine Size/Weight	Printer: 1795*800*1590.2mm 230kg Powder Shaker: 965*1010*1082mm 97kg		
Packaging Size/Weight	Printer: 1940*770*880mm 245kg Powder Shaker: 940*780*1190mm 116kg		



Saves freight and space



Anti-collision system



3-stage heating zones



Powder auto-recycling device